

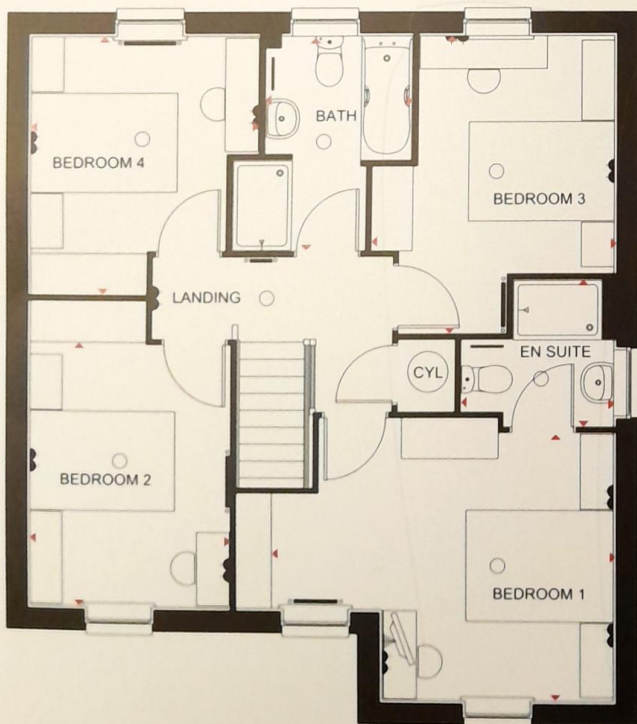
Drumoak

4 bedroom detached home

Ground Floor

Lounge	6405 x 3139mm max	21'0" x 10'4" max
Kitchen/ Family/Dining	6015 x 4735mm max	19'9" x 15'6" max
Utility	2172 x 1857mm	7'2" x 6'1"
WC	2140 x 1063mm max	7'0" x 3'5" max

[Approximate dimensions]



First Floor

Bedroom 1	4652 x 3594mm max	15'3" x 11'9" max
En Suite	2071 x 1950mm max	6'10" x 6'5" max
Bedroom 2	3590 x 2750mm	11'9" x 9'0"
Bedroom 3	4030 x 3314mm max	13'3" x 10'10" max
Bedroom 4	3506 x 3097mm max	11'6" x 10'2" max
Bathroom	2912 x 1985mm max	9'7" x 6'6"

[Approximate dimensions]

Key

○	Light fitting	◁	TV aerial socket	ST	Store
◁	Electric socket	—	Radiator	◁	Dimension location
◁	Telephone outlet point	B	Boiler		

IMPORTANT NOTICE: [Computer Generated] Images are for illustrative purposes only. Individual features such as windows, brick and other materials' colours may vary, as may heating and electrical layouts. Floor plans are intended to give a general indication of the proposed floor layout only. The dimensions are accurate to within +or- 50mm. Dimensions should not be used for carpet sizes, appliance spaces or items of furniture. Please ask our sales adviser for details of the treatments specified for individual plots. [Computer Generated] Images and dimensions are not intended to form part of any contract or warranty. Furniture and landscaping is shown for